

WALTHAM CREATIVE START NEWSLETTER JUNE 2024



As the sun gets brighter and children are out for longer, please put sunscreen on children before coming to school.

UPCOMING EVENTS:

NO SCHOOL:
6/10 - STEM EVENT,
2 MILITIA DRIVE, LEXINGTON

6/18 - PROFESSIONAL
DEVELOPMENT DAY

6/19 - JUNETEENTH

NO MONDAYS IN JUNE FOR
DURATION STUDENTS

END OF YEAR EVENTS: 6/7

PARENT MEETING: 6/13
OPEN AIR MARKET: 6/13

POLICY COUNCIL: 6/26

A Year in Review

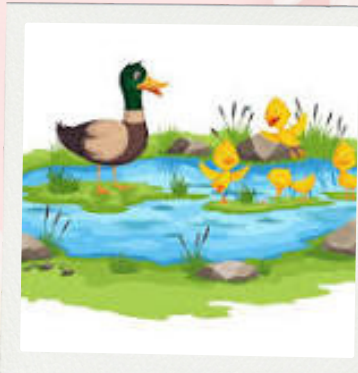
As we reach the end of our school year, we look forward to celebrating all of our students and families accomplishments. We will be hosting classroom and center wide events in early June to celebrate growth and successes shared by all. Teachers will also be sharing end of year portfolios with families at their home visits so that they can chronicle their child's journey this year.

FAMILY AND COMMUNITY OPPORTUNITIES

Community Resource Highlight: EBT Card to Culture Discounts

Families with an EBT Card can get free or discounted admission to Museums and Cultural Sites across the state. Some of these attractions include the Discovery Museum, the Children's Museum, the Franklin Park Zoo, the New England Aquarium, and many more. Go to this website to see the full listing of discounted places and the cost of their admission.

<https://www.mass.gov/info-details/ebt-card-to-culture-organizations>



COMMUNITY EVENTS

Waltham Pride - Sunday June 16, 11 am - 4 pm
Waltham Common, 610 Main St.

WALTHAM PUBLIC LIBRARY:
Tuesdays, 1030 am to 11 am: Te Cuento un Cuento
Tuesdays, 6pm to 630 pm: Family Storytime
Wednesdays, 1030 am to 11 am: Toddler Time
Fridays, 10 am to 1030 am: Baby Storytime

For more ideas, check out: communitykangaroo.com/waltham/calendar

SOCIAL EMOTIONAL CORNER

SECOND STEP:

OUR PRESCHOOL STUDENTS ARE STARTING TO TALK ABOUT TRANSITIONS OUT OF THE CLASSROOM. IN CLASSES 3 AND 5 WE WILL BE TALKING ABOUT TRANSITIONING TO A NEW CLASSROOM IN THE FALL. FOR CLASSES 1 AND 4 WE WILL BE TALKING ABOUT TRANSITIONING TO KINDERGARTEN. OUR STUDENTS GOING TO KINDERGARTEN ARE STARTING KINDERGARTEN GROUPS WHICH ARE SMALL GROUPS WHERE WE WILL BE DISCUSSING USING SECOND STEP SKILLS TO HELP US WHEN WE START KINDERGARTEN.



BABY DOLL:

STUDENTS IN CLASSROOMS 2 AND 8 HAVE BEEN DOING DIFFERENT STOP AND GO ACTIONS WITH THE BABY DOLL. WE WILL BE ADDING NURSERY RHYMES WITH CARING FOR OUR BABIES.

KINDERGARTEN PARENT GROUP:

ON TUESDAY JUNE 11TH AT 1:30 WE WILL HAVE A GROUP MEETING FOR PARENTS WHO HAVE KIDS WHO ARE GOING INTO KINDERGARTEN. AT THIS MEETING WE WILL BE TALKING ABOUT ANY WORRIES THAT YOU HAVE FOR YOUR CHILD IN THE TRANSITION.

LETTERS TO TEACHERS



As this year wraps up, children can become anxious about what the next year will look like. Taking some time to write their future teacher a letter together can help your child share things about themselves, like their favorite games or shows, colors or animals. And it is also an opportunity for them to talk about what they hope to do next year, including what they would like to learn about or any questions they may want to ask their new teacher.

In the Classroom

THIS MONTH, WE WILL BE FOCUSING OUR LEARNING ON THE CHANGING SEASONS AND LOCAL WILDLIFE. WE WILL BE LEARNING ABOUT SUMMERS, CAMPING, AND POND LIFE.

WE LOOK FORWARD TO EXPLORING NATURE AS THE WEATHER CONTINUES TO WARM.



"Children live in the world of their own interests, and the work they do there must be respected, for although many activities of children may seem pointless to grownups, nature is using them for her own ends. She is building mind and character as well as bone and muscle."

Maria Montessori



Eat the Rainbow

Summer is the perfect time to get local, fresh fruits and vegetables. Fresh fruits and veggies tend to be healthier for you and the environment. Visit local farms to pick your own, or take advantage of the local farmer's markets. Waltham Fields Community Farm will be offering an outreach market to low income families this summer on Tuesdays starting July 16th.